



"Art is not what you see,
but what you make others see."
Edgar Degas

SASA COUNCIL

President: Irene Oxley
Vice President: Ingrid Wallach
Treasurer: Mike Forrester
Secretary: Louise van Wyk
Catering: Avril Retief
Social Photographs: Sandy Rogerson

From the President



It's Winter and I'm a summer person, time for nice roaring fires and a little glass of what you fancy.

What a fabulous evening last members meeting, Lesley Charnock and Lyn Northam giving advice on your paintings, for those who participated I know you all walked away with a different perspective on your art piece.

We are now gearing up for Selection Weekend, only this time its Selection Day, what is she talking about I hear you say.....

I have always felt that the judges who sit in a hall for hours on end and get to see each painting for 15

seconds max is not enough time, also seeing over 300 art pieces in one day is mind boggling. So, your council have been working very hard to make it a more Judge friendly experience, judges will be supplied with a file of all the artwork to browse at their own pace. Read all about it in this SASA News.

For those of you who struggle with pricing your Art Work, you are in for a treat, Marc Alexander will be with us on 26th. That's a members evening not to miss.

Chow for now
Irene

Diary

| | | | |
|--------|-----------|----|---|
| June | Thursday | 26 | Members Meeting - How to Price Your Artwork with Marc Alexander 19:00 at the Cape Town Athenaeum News. |
| July | Saturday | 7 | Submissions for Selection for Annual Exhibitions opens. More information on page 7. |
| July | Wednesday | 18 | Submissions for Selection for Annual Exhibitions closes |
| July | Thursday | 31 | Members Meeting - Land/Seascape Life and Still Life Competition. 19:00 at the Cape Town Athenaeum News. |
| August | Saturday | 16 | Selection for Annual Exhibition - In-person judging, Cape Town Athenaeum |

New Members



A warm welcome to our new and returning SASA Members and we hope to see you all very soon.

Rosetta Stander Fouche – Hout Bay
Sonia Welch – Milnerton
Chloë Hugo-Hamman – Constantia
Clifford Boobyer – Fish Hoek
Carrie De Beer – Rondebosch
Sonja Grieve – Cape Town
Sue Impey – Durbanville
Janine Shapiro – Newlands



WHATSAPP

Please ensure that you have the number **071 496 1029** saved as a contact on your phone in order to receive our broadcast messages. Should you have the number saved to your phone and still don't receive WhatsApp reminders, please send a WhatsApp to this number and we will ensure that you are included in the broadcast group.

2025 Council

The current council members are reflected on page 1. We are always looking for additional members to assist, so please don't hesitate to apply.

Libby Harrison continues to handle the Social Media portfolio on our behalf.

ADVERTISING YOUR EXHIBITION OR EVENT

Dear members, please feel free to place an advert for any exhibition or art related event in the newsletter. Remember, the proceeds of these adverts are dedicated towards our outreach programs to give other emerging artists a leg up so that one day they too can have their own exhibition.

Advertising rates and procedures can be found on the last page of this newsletter.

Riverside Mall (Ground Floor)
Cnr Main & Belmont Road
Rondebosch 7700, Cape Town
TEL: 021 685 1877

The Italian Artshop

Introducing the DIVOLO range of paints and products...

Divolo has produced fine art materials in Florence, the cradle of Renaissance culture, since 1915.

Divolo has always made colours that satisfy the needs of professional painters, restorers, students, and art lovers, all the while upholding their deep respect for tradition.

We are very excited to be able to introduce yet another amazing brand to the SA market. Divolo offers amazing quality at prices that are unbeatable!
Available online and in-store

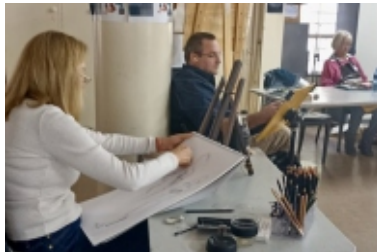
All SASA members get a 10% discount at The Italian Artshop

Life Drawing Sessions - 3 to 31 May - Feedback

Our annual Life Drawing sessions took place at the JP Duminy Hall, every Saturday morning for the month of May.

This is a very popular event on our calendar, and as always the participants enjoy honing their skill in the art of figurative drawing in a secure environment with professional models.

As always, Audrey Innes and Avril Retief made the arrangements and had everything run smoothly. Thank you, ladies.



Monthly Meetings

SASA Monthly Meetings are held at the Athenaeum, Newlands, on the last Thursday of every month at 19:00. Entry is R10 for members and R20 for guests, which includes refreshments. We encourage you to attend and find out what's going on in your society and also connect with your fellow artists. There is always a regular informative demonstration, talk or competition scheduled for the evening.



Please continue to share news or images taken at any SASA event with us, so that we can make these available to all our members. For Instagram you can contact Sandy Rogerson (083 462 8103). For Facebook please contact Libby Harrison at art@libbyharrison.co.za or Audrey Innes at audsinnes@hotmail.com



loot.co.za

Loot.co.za invites you to shop our wide range of Arts and Crafts supplies at great prices

GET 5% OFF ARTS AND CRAFTS PRODUCTS WHEN YOU USE THE COUPON CODE:

SASAJUNE25ART

Minimum spend R250
Expires 30 June 2025
One voucher per customer and order

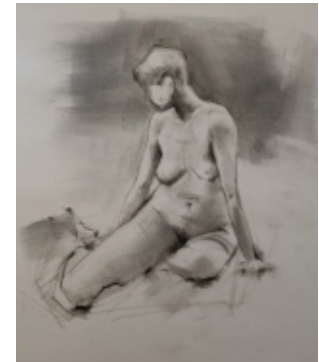
www.facebook.com/Lootcoza
www.x.com/lootcoza
www.instagram.com/lootcoza
www.tiktok.com/@lootcoza

[CLICK www.loot.co.za](https://www.loot.co.za)
[DIAL 087 820 1007 \(\\$668\)](tel:0878201007)
[EMAIL info@loot.co.za](mailto:info@loot.co.za)

FIND EVERYTHING YOU NEED ONLINE AT www.loot.co.za

FREE COURIER OR CLICK & COLLECT DELIVERY ON ALL ORDERS OVER R400 ANYWHERE IN SOUTH AFRICA*

Life Drawing Sessions - 3 to 31 May - More Pics



Brush and Canvas 

Fine Art Supplies / Graphic Materials
Members save **10%**



www.brushandcanvas.co.za

Open Sundays & Public Holidays

Belvedere Square, Claremont, Cnr Belvedere & Keurboom Road
email: info@brushandcanvas.co.za Tel: 021 674 3022

THE DECKLE EDGE 



**Art Society Members
Save 10% on Art Supplies**

Over 20 000 Fine Art Materials To Choose From

www.deckledge.co.za 

Email: hello@deckledge.co.za Call: 021 201 4100

Monthly Meeting Feedback - Reflections on Advice Session

Our sincere thanks to Lyn Northam (FSASA - member of SASA since 2001) and Lesley Charnock (member of SASA since 1997) for the generous and insightful feedback they shared at May's Members Meeting. Their observations were thoughtful and encouraging, and the session was both inspiring and deeply educational — not only for those whose work was discussed, but for everyone present.



We came away with a number of valuable pointers:

Colour and Surface

- Large surfaces should not be treated as flat or uniform; subtle shifts in colour and tone bring them to life.
- Skies usually benefit from a gradient — typically darker at the top and lighter near the horizon.
- Ground planes can also have a gradient, often with warmer (redder) tones in the foreground, which helps create depth.
- Greens are best mixed manually from red, yellow, and blue to create variety and harmony.
- I also learned about high-key and low-key colours and how these can affect mood and contrast in a painting.

Light, Shadow and Depth

- A consistent light source throughout the painting is essential.
- As objects recede into the distance, they should lose detail, contrast, and saturation.
- Shadows are important for grounding objects and conveying depth.

Composition and Focal Point

- Avoid placing high levels of detail near the edges of the canvas — keep the eye focused where it matters most.
- The rule of thirds is a useful guide for creating a balanced, dynamic composition.
- Objects grouped in odd numbers (such as 1, 3 or 5) tend to feel more natural and visually pleasing.

Monthly Meeting Feedback - continued

Working from Photographs

- Photographs are helpful references, but they are not sacred. The artist is free to move or simplify elements to improve the composition.
- Unlike photographs, our eyes focus selectively — we naturally blur out peripheral details. Painting from life helps us better understand how we actually see the world.



Final Thought

- Most importantly, enjoy the process. Staying open, curious and relaxed can make a real difference in both the work and the learning.

Thank you to Jared Petersen for this article.





Brush and Canvas

Fine Art Supplies / Graphic Materials

Members save 10%



www.brushandcanvas.co.za

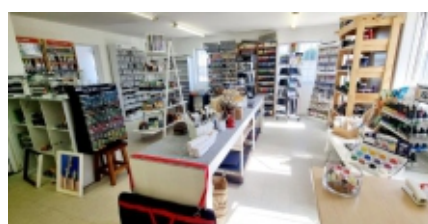
Open Sundays & Public Holidays

Belvedere Square, Claremont, Cnr Belvedere & Keurboom Road
email: info@brushandcanvas.co.za Tel: 021 674 3022



After the momentous move, Artland is settling into the new spaces.

Thank you to the artists and friends who have popped around already to see our new space, and support us with their art supply, artisan canvases and logistical requirements.



Our bright and sunny space is perfect for all our art supplies



Full framing consulting space for all your framing requirements.

Looking forward to seeing you all soon at
Unit F7, Prime Park, 15 Mocke Road, Diep River.

Unit D8, Prime Park, Mocke Road, Diep River 7800 South Africa
www.artland.co.za +27 83 265 7737 / +27 21 671 6001



Selection for Annual Exhibition 2025

8 July to 16 August 2025

This year Selection will be done in two phases, of which the first will be digital.

SIMPLE GUIDE TO ENTERING YOUR ARTWORKS FOR SELECTION

How You'll Get Information

We'll send you an email with all the rules and details you need to join the competition. Please check your email.



How to Submit Your Artwork

- Fill Out the Form: We'll email you a link to a website where you can fill out an online entry form. Just complete the form and click "SUBMIT." It will come to us automatically—no need to email it.
- Send Photos: Take clear, good-quality photos of your artwork and email them to secretary@sasa-artists.co.za. Make sure to label each photo with the artwork's title. If you need help, Whatsapp or email Ingrid or Louise. We'll send their details in the email with the rules.
- Pay the Fee: Pay the entry fee and email proof of your payment (like a receipt) to secretary@sasa-artists.co.za.

Bringing Your Artwork

- If your artwork qualifies for the Annual Exhibition but doesn't need in-person judging, you don't have to bring it in. Just follow the usual exhibition rules (we'll send those in the email).
- If your artwork needs in-person judging, you must bring it to the Athenaeum on the date and time we tell you in the email.

If you have any questions at this stage you may contact Ingrid on exhibitions@sasa-artists.co.za

How Your Artwork will be Judged

- Three judges will look at your artwork photos online. This lets them take their time, zoom in to see details, and even look again if needed.

What Happens After Judging

- We'll email you your scores and let you know if your artwork qualified for the Annual Exhibition. If you have achieved above a certain score, we might ask you to bring it in person for a second round of judging. This will happen at the Athenaeum on August 16, 2025. The in-person judging is for the judges to pick, at their discretion, the best artworks in each category and give special awards.

COMPETITION TIME!

What's inside the box?

- 1 COMPLETE WOODEN BOX
- 12 20ML TUBES OF DIVOLO ACCADEMIA ASSORTED OIL PAINTS
- 1 TUBE OF DIVOLO ACCADEMIA ZINC WHITE OIL PAINT IN A 60ML TUBE
- 1 WOODEN PALETTE
- 1 BOTTLE OF LINSEED OIL
- 1 BOTTLE OF ODORLESS SOLVENT
- 1 SMALL FLAT LONG-HANDLED BRUSH
- 1 PACK OF CHARCOAL STICKS
- 1 DOUBLE OIL PAINTING POT

Worth R2650.00

Winner will be announced on the 1st of July 2025

"In the early twenty-first century, polyester (PET form) exhibits the best combination of properties and provides the most promising starting point to improve the performance of artists' canvas even though it has yet to match linen or cotton kinaesthetically or aesthetically."

"Conservation of Easel Paintings"
By Joyce Hill Stoner & Rebecca Rushfield



And now it is here...
Introducing ACF Canvas!
Developed, designed and
manufactured in South Africa!



YouTube Views: China's Van Goghs: The Village That Paints Thousands Of Fakes A Year



Until 1989, the village of Dafen in the city of Shenzhen, China was little more than a hamlet. It now has a population of 10,000, including hundreds of peasants-turned oil painters. In the many studios, and even in the alleyways, Dafen's painters turn out thousands of replicas of world-famous Western paintings. Nobody thinks anything of an order for 200 Van Goghs. To meet their deadlines, painters sleep on the floor between clotheslines strung with masterpieces.

https://youtu.be/_xyUi4_Wzo?si=4qg_OKIDPtN2As3c

Painting Groups To Join With Space To Paint

THURSDAY: 10am to 1pm in Claremont (JP Duminy Hall). Easels, tables, and chairs are available. Bring own painting supplies and refreshments. For more information on the above, please contact Audrey: Cell: 076 5713 976 or email: audsinnes@hotmail.com

FRIDAY MORNING: Non-tutored Art Group at Peter Clarke Art Centre in Claremont. Enjoy a relaxed morning of painting or drawing with a friendly bunch of artists.

For further details contact Dianne:
Cell: 082 8955 122

Members' Discounts

Your 2025 membership card will allow you to claim a **15% discount** from **ACF Bespoke Canvases**.

A **10% discount** is available from:

- Deckle Edge in Woodstock
- ETH Canvases in Woodstock
- The Italian Artshop in Rondebosch
- Brush and Canvas in Claremont
- Artland in Diep River
- The W'rite Shoppe in Longbeach & Sun Valley Malls and Steenberg Village
- Oxford Framing & Art Supplies in Gardens Centre and West Coast Mall

You will need to present 2025 Membership Card when claiming your discounts.

Also a **5% discount** from **Art Sauce** in town.

Winsen's Canvases offer free delivery of their canvases from their factory in Johannesburg.



Art Classes

If you would like your name added to this list, please email secretary@sasa-artists.co.za.

LAURA WENMAN MFSASA teaches drawing and oil painting technique classes for beginners to advanced students from her studio in Parklands on Tuesday mornings and Friday afternoons. Contact her at laurawenman@gmail.com

SONJA FRENZ FSASA runs workshops from her studio in Durbanville. Contact her at sonjafrenz@gmail.com for more information

LYN NORTHAM FSASA holds her 'beginner and/or get back to it' oil classes at the Newlands Scout Hall on Thursday mornings. Contact her at northamlyn@gmail.com

WYN ROSSOUW FSASA offers morning classes in the Bergvliet area, specialising in drawing and oil painting. Beginner's welcome! Contact her at wynrossouw@gmail.com

PENNY STEYNOR SFSASA holds watercolour classes during the week from a studio in Pinelands. Contact her at steynor@mweb.co.za

HELEN VAN STOLK FSASA offers workshops (online and live-experiential) for artists exploring intuitive expressive creativity. For more information, please email helenvstolk@gmail.com or visit helenvanstolk.com/workshops---information.html

VAL WATT FSASA holds monthly pastel workshops at her home studio in Pinelands – with different themes. Contact her on 081 010 8121 or at valbrownwatt@gmail.com

ELIZE BEZUIDENHOUT holds regular portrait workshops in her studio in Durbanville. For more information and to find out times, contact Elize at elize.artist@gmail.com

LINDA BRILLEMAN offers Decorative Painting Brushstroke classes in Tableview. She is an Internationally Certified Decorative Painting Brushstrokes teacher. Contact her at lbrilleman01@gmail.com

GLENDA CHAMBERS offers both morning and evening classes and regular workshops in watercolour and oil in the Blaauwberg area. You can contact her at gchambers@mweb.co.za



LESLEY CHARNOCK teaches oil painting workshops: portraits, still life, colour mixing and en plein air workshops in the winter months only (May to November). Contact her at lesleycharnock@gmail.com or on 082 424 1033

SALOMÉ KRUGER offers drawing classes in Somerset West at the Helderberg Fine Art studios, Wednesday mornings from 09:00 to 12:00. For more information contact her on 072 591 2667 or at smkruger@mweb.co.za

MARCELLE LYONS holds oil and watercolour classes, workshops and courses in the Girl Guide Hall, Alma Road, Rosebank on Monday mornings. Contact her at marcelle.lyons@gmail.com

JOANNE MCGILVRAY holds sculpture classes in Kalk Bay for any hand built ceramic pieces, including sculptures, functional art and decorative clay work. 6-week modules, maximum 4 students per class. Contact her on 082 443 3116 or at joanne.mcgilvray@gmail.com

LYNNE MENGE holds regular workshops and classes in acrylic in her studio in the Milnerton area. Contact her at lynn@adrenalyn.co.za

VICKI NORCLIFFE offers portrait classes on Monday mornings with a model. Contact her at vickinorcliffeart@gmail.com

LIZ PEARSON offers basic oil painting classes every Monday and Tuesday morning in the Kenilworth area. Please contact her at lizp@iafrica.com

INGE SEMPLE from January 2025 runs beginner and intermediate drawing, watercolour and oil classes at Peter Clarke Art Centre and workshops in other venues in Cape Town for Cornerstone Art Atelier. Inge can be contacted via www.ingesemple.com or 072 597 5375.

IZAK VOLLGRAAFF offers Tuesday evening art classes in the City Bowl and Saturday morning classes in Edgemead. Contact Izak at izakart@gmail.com or on 082 468 4794

KIM WATERMEYER (In The Zone) – light and airy studio in Plumstead. For fun, relaxed acrylic painting and mixedmedia lessons for beginners and intermediates. She also offers creative painting projects for those who want to join in. AM and PM classes. Contact her on 079 343 5953 or at kimwatermeyer.co.za/in-the-zone-art-studio

LIBRARY



Our Library is open at our monthly meeting from 17:50 to 18:50. Your membership entitles you to take out two items per month. There are some lovely, helpful and informative publications to browse through. Members with outstanding library books or other items, especially those more than two months' overdue, please make every effort to return them.

FINES: As we have numerous DVDs missing, we have increased the Fines as follows:- Bringing back an empty DVD case - R50 on the spot. Not renewing (limited to one month only) R50. And thereafter R50 for each month it is not returned. If you have any queries regarding any aspect of the library, please contact: Audrey at audsinnes@hotmail.com

PLEASE NOTE: The library will be closed for June. Members who have items out on loan from the library will receive one month's free extension and only need to hand them in in July.

Framers



We have included a list of our members who offer framing services. If you would like your name added to this list, please email: secretary@sasa-artists.co.za

Artland Framing - Unit D8, Prime Park, Mocke Road, Diep River 7800 South Africa www.artland.co.za +27 83 265 7737 - From Concept to Conclusion. Wide range of framing options with personal service and professional workmanship.

Coralie Bradburn, Blaauwberg - Custom mountboard cutting. She has a computerised mount cutter, so all work is accurate and precise. Individual boards or bulk cuts, regular, v-groove, circular, oval and many more options. White and off-white boards always available: other colours can be ordered on request. 082 925 2416.

Mountain View Framing & Design: Shop 13, Platteklouf Shopping Centre. Bespoke framing of all artworks. Contact Pamela on 021 558 4863 or at mvframing@outlook.com Website: mountainviewframing-design.com

Village Framers. 58 Belvedere Road, Claremont. 021 683 8996 or 084 585 4535; info@villageframers.co.za, www.villageframers.co.za

Winsen's Canvases. Specialises in manufacturing custom-made artists' canvases and custom, hand-gilded frames, with the capability of re-stretching original artworks, including the stretching of canvas prints. Unit 3, Block C, Gallagher Corner, 23 Richard's Drive, Midrand. Free courier delivery nationwide. 011 315 0565; www.winsens.co.za

Advertising Rates

All money earned from advertising goes towards the SASA Outreach Programme.

To advertise in the newsletter or send out an email to the SASA database, the rates for **Art-related** events are:

Newsletter: Full page **R260** Half page **R160** Quarter page **R95**

Email rates: Business or non-members advertising service or goods for profit **R250**.
Members advertising service or goods for profit **R200**.
This also includes a post on the SASA Facebook page.

Bookings Contact: secretary@sasa-artists.co.za

Please Like, Follow and Share the SASA Social Media Posts and Pages. Thank you.



<https://www.facebook.com/SASArtists>



<https://www.instagram.com/sasa.artists>

We are an affiliate member of the South African National Association for the Visual Arts (SANAVA)



Thank you to our Patrons: Sam Nhlengethwa, Conrad Theys and Hayden Proud

President: Irene Oxley president@sasa-artists.co.za

Secretary: Louise van Wyk 071 496 1029 secretary@sasa-artists.co.za

Treasurer: Mike Forrester 021 761 6357 treasurer@sasa-artists.co.za

ONLINE: <http://www.sasa-artists.co.za> | www.facebook.com/SASArtists | www.instagram.com/sasa.artists

<http://sasartists.blogspot.com>

POSTAL: PO Box 2574, Clareinch, 7740