



**"Perché non parli?"
("Why don't you
speak?")**

**Michelangelo
exclaimed while
striking the knee of his
finished statue of
Moses with a hammer.**

SASA COUNCIL

President:	Liz Pearson
Vice President/	Audrey Innes
Exhibitions Coordinator:	Anschen Friedrichs
Treasurer:	Mike Forrester
Secretary:	Louise van Wyk
Catering:	Avril Retief
Newsletter:	Jared Petersen
Social Photographs:	Sandy Rogerson
Library:	Sonja Frenz
Promotions:	Dalene Smit
Website:	Marietjie du Toit

Thank you to our Patrons: Sam Nhlengethwa, Conrad Theys and Hayden Proud

From the President



Hello Artists

This year is really flying by – already April, the long weekend is here and the cooler months on their way.

Our first Members' exhibition will be opening on this Tuesday, 7th April and we've had a record response from those members wanting to exhibit. We are also having an opening for this Members' exhibition, I think the first one for any members' exhibition since Covid! I do hope you can attend and support your fellow artists. The incredible René Snyman will be opening the exhibition for us, so lots to look forward to.

We are currently planning our workshops for this year, and we have some exciting talent lined up. Also in the pipeline are our annual life drawing sessions with the first one starting at the end of May. Keep your eyes open and book soon for these as they are very popular.

We are also looking at possibly introducing visits to artists studios, special places of interest and maybe guided tours of art shops and art supply manufacturers. It would be

great if you could let us have your feedback on this. Send us an email. You could even let us have your own suggestions.

We have had a change in our monthly meeting programme. When you come in, at 6.45pm, coffee and tea will be nice and hot, so grab a cup and a snack before coming into the main hall. There is also no charge for coming to the meetings, just please remember to put your name down for our records.

Members and guests at last month's meeting were treated to some special advice on a little used medium, PanPastel, by Fellow, Anschen Friederichs. She had the

most beautiful display of colours and explained how this medium is used, how quickly it can be applied and how it can be used together with acrylic and watercolour paint and, of course, with pastels. Thank you, Anschen, it really was a treat to see what this medium offers.

This month wildlife artist, Peter Gray will be giving us a demonstration and talk on his work. Peter is an award-winning artist who has lived and worked in London. He grew up in Zimbabwe, close to Hwange National Park which obviously nurtured his love of nature. Make sure you put the 30th April in your diaries so as not to miss this one.

Until then, keep safe.



Painting by Peter Gray

DIARY

April	Tuesday	07	Members' 1 Exhibition 2026 , Hanging Day and Opening. An email with more information has been sent out.
April	Tuesday	21	End of Members' 1 Exhibition. Collection of artworks from 15:00 to 17:00.
April	Thursday	30	Members' Meeting , 19:00, at the Cape Town Athenaeum, Newlands. Wildlife painting demo with Peter Gray.
May	Saturday	23	Winter Workshop: Pastel over Watercolour by Penny Steynor SFSASA. Peter Clarke Art Centre, 10:00 to 15:00
May	Saturday	30	Life Drawing Sessions Start. Rotary Hall. More information on Page 3.

SASA LIBRARY

Your SASA membership gives you access to masterclass tutorials and global art trends. Our collection is packed with insightful, inspiring and beautifully curated publications to hone your skills or explore something new.

You can borrow two items per month, absolutely free. Visit the Library at our monthly meeting from 17:50 to 18:50. Arrive early, browse at leisure, and take home something wonderful to discover your next creative breakthrough.

If you have any queries regarding any aspect of the library, please contact: Audrey at audsinnes@hotmail.com



NEW MEMBERS



A warm welcome to our new and returning SASA Members. We hope to see you all very soon.

- Sonja de Kock – Vredehoek**
- Ester Blake – Yzerfontein**
- Jannique Gildenhuys-Delport – Kuilsrivier**
- Caroline Tindall – University Estate**
- Yvonne Maritz – Cape Town**
- Theresa Senger – Durbanville**
- Tamerrin Dixon – Richmond Estate**
- Anastassia van der Linde - Paarl**
- Hannie Hattingh – Greyton**
- Brett Martin – Newlands**

PETER CLARKE ART CENTRE PRESENTS
EXHIBIT B
 AN ART EXHIBITION WITH A PURPOSE

apply
NOW

SUBMISSION DEADLINE , FRIDAY, 10 APRIL
 OPENING EVENT : FRIDAY, 8 MAY @ 18H00
 SILENT AUCTION : 18H30 - 19H30

021 683 2720 - WWW.PCAC.CO.ZA -
 VREDENHOF, KEURBOOM RD NEWLANDS



If you would like to receive Whatsapp broadcast messages, please email Louise on secretary@sasa-artists.co.za and save this number to your phone: **071 496 1029**

Please note: This number is not monitored permanently. Our main mode of communication is

To have your website or art social media page featured on the SASA website, email the link to Marietjie at mdutoit@mweb.co.za

MONTHLY MEMBERS' MEETING

SASA Monthly Meetings are held at the Athenaeum, Newlands, on the last Thursday of every month at 19:00. Entry is free and includes refreshments. We encourage you to attend and find out what's going on in

your society and also connect with your fellow artists. There is always a regular informative demonstration, talk or competition scheduled for the evening.



MEMBERS' MEETING - 26 MARCH 2026 ANSCHEN FRIEDRICHS SHOWS US WHY SHE LOVES PANPASTEL

Art is more than a full-time occupation to Anschen. It is a glorious hymn of praise that brings her heart and soul to life.

Anschen's art journey began from within. She was already well accomplished in her role at an oil and gas company when she received a vision to paint. Consequently, in 2018, Anschen pursued art full-time. In 2022, after experimenting with various mediums, she discovered PanPastel after being gifted her first set. From that moment, there was no looking back.

This professional-quality medium behaves like fluid paint and can be mixed like oils or acrylics, while maintaining an ultra-soft texture that allows for great creative freedom. Although there originally 80 colours available, 53 new colours became available when Golden took over the brand. Artists can also purchase a set of pure colours along with black and white to mix a wide range of tones. Anschen suggests that, because PanPastel can be expensive, beginners should start with a basic set: black and white colours, a Sofft tool, a sponge, and pastel paper. Additionally, a putty eraser, pastelmat paper, and some paper towel are useful. Typing paper only recommended for testing / mixing, not painting.



There are four main Sofft tools: a straight edge, a wedge, an oval, and a round tool. Anschen recommends the oval tool, as it is the most versatile in her view. The sponge tips can be used on either side, and as they wear down, they can still be kept, as the worn texture creates interesting patterns. The sponges can be washed, but simply wiping them on paper towel is usually sufficient to remove pigment. PanPastel colours are sold individually and in sets. It is recommended to look out for specials, as sets are often more cost-effective than buying individual colours. The colours are specially formulated with a binding agent that holds the powder together. Care should be taken not to drop them, as this can break



MEMBERS' MEETING - 26 MARCH 2026 (cont.)



the binding and affect their usability. Colours can be mixed in two ways: either by transferring pigment onto a separate sponge and blending there, or by picking up multiple colours on one Sofft tool and mixing them directly on the pastel surface.

Pastelmat paper is essential, as they are specially designed to hold the pigment and allow for multiple layers to be applied. While-pastelmat can be washed, they will not return to their original state, though enough pigment can be removed to create a new image. Pastelmat is available in various colours, which can enhance artistic effects. When working with PanPastel, Anschen recommends first outlining the image and marking the dark, mid, and light tones. From there, the artist can work either from dark to light or light to dark, blocking in the tones. The process may initially look unrefined, but trusting the process allows the image to develop. Blending edges helps create smooth transitions, but over-blending should be avoided. Afterward, the artwork can be evaluated and refined with additional layers.

Fixative can be used, but Anschen believes it is not necessary. Always test if you are going to use fixative. Proper framing under glass is sufficient, provided the artwork remains upright.

If laid flat, some pigment may loosen, although this has not been an issue in her experience.

A final note: Anschen once attended a party and, in need of blue makeup, used PanPastel instead. Three days later, she was still wearing striking blue colour. This should be attempted at one's own risk.

Anschen is available for workshops, see page 12 for details.



THE ITALIAN ARTSHOP
FOR ALL ARTISTS PAINTS AND MATERIALS



Riverside Mall (Ground Floor)
Cnr Main & Belmont Road
Rondebosch 7700, Cape Town
TEL: 021 685 1877

The Italian Artshop

Since 1915 "Divolo" has been producing fine art materials in Florence, the cradle of Renaissance culture, using a careful respect for tradition.

We stock a wide range of Divolo materials, including pigments, gouache, oils, watercolour sets and plenty of mediums and auxiliaries




All SASA members get a 10% discount at The Italian Artshop




MEMBERS' MEETING - 30 APRIL 2026 - PETER GRAY

At our next members' meeting on 30 April 2026 Peter Gray will be giving a talk and demo on his hyper-realistic wildlife paintings.

Peter is a multi-award winning artist. He was born in Zimbabwe in 1950 and sold his first artwork when he was 12 years old.

Living near the Hwange National Park and a stone's throw from the Matobo Hills National Park, Peter grew up with a passion for these wilderness areas that became the nurturing ground for his career as an artist. Peter was educated at the University of Cape Town's, Michaelis School of Fine Art and furthered his studies in gemology, jewellery design, copper plate and seal engraving.

In 1973, he moved to London, setting up home and studio. From this location, he opened and operated a fine-art business trading in the UK, USA and Zimbabwe. During this time, Peter took on commissioned portraits and participated in a number of group exhibitions in and around London.

In 1983, he relocated to Zimbabwe and established studios, a workshop, foundry and gallery producing and selling bronze and silver sculpture, paintings, commissioned jewellery and objet d'art. Currently,



he lives in Cape Town, South Africa with his family and works from his studio in the Silvermine Nature Reserve. His exceptional artworks feature among collections of art enthusiasts, museums, galleries, corporations and nature lovers worldwide.

The meeting will, as always be held at the Cape Town Athenaeum in Newlands. For our new members, here is the location link

<https://www.maps.app.goo.gl/CrAcWicMJFwXraaE8>

When you get there, grab a cup of coffee or tea and a snack before moving to the main hall for the meeting. We look forward to seeing you there.

LIFE DRAWING SESSIONS - 30 May, 6, 13, 20, 27 June

Life Drawing Sessions

30 May, 6, 13, 20, 27 June

The Rotary Hall in Newlands will again be our venue for our life drawing sessions this year. Our first session is scheduled for 3 May.

These sessions, facilitated by Audrey Innes and Avril Retief, are very popular and numbers are limited. Please make sure to book early to ensure that your spot is secured.

If you would like to attend, email secretary@sasa-artists.co.za

The cost will be R150 per session or R700 for all five. Once your booking has been received, you will get an acknowledging email. Payments can be made to SASA Nedbank Constantia branch 198765, Account number 1088006981 and PLEASE use your name and what you are paying for as the beneficiary reference – 'name/life drawing'



**WINTER WORKSHOP - 23 MAY 2026,
PASTEL OVER WATERCOLOUR WITH PENNY STEYNOR**

Doyenne of art **Penny Steynor SFSASA**
will be presenting a workshop on the innovative process
of working with **pastel over watercolour**.
This fun and interesting technique yields the spectacular results
you can see in the images on this page

We are delighted to host this workshop exclusive to SASA members.



Date: Saturday 23 May 2026

Time 10:00 to 15:00

**Venue: Peter Clarke Art Centre,
Newlands.**

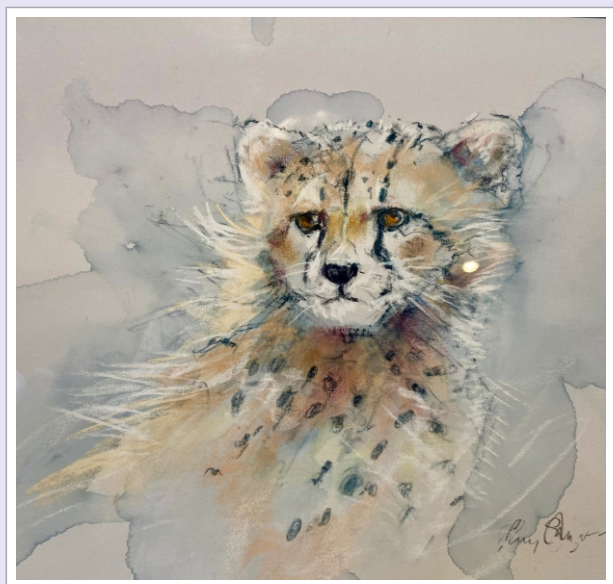
Cost of Workshop: R500

Price includes one sheet of hot press Fabriano
paper suitable for this technique.

Artists to supply their own watercolours and
pastels (chalk pastel, both soft and hard work)

To book or for any enquiries, please
contact Louise at

secretary@sasa-artists.co.za



To secure your booking, pay the workshop fee
to:

Banking Details

NAME: South African Society of Artists.

BANK: Nedbank Constantia.

CODE: 198765.

Account No: 1088 00 6981

Please use YOUR NAME/WS as the beneficiary
reference.

FIRST MEMBERS' EXHIBITION - 7 TO 21 APRIL 2026

THE SOUTH AFRICAN SOCIETY OF ARTIST

Presents



MEMBERS' 1 EXHIBITION

7 - 21 April 2026

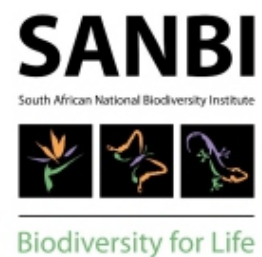
KIRSTENBOSCH BOTANICAL GARDENS

Richard Crowie Hall
(entrance via Gate 2)



The exhibition will be open on
the evening of
7 April and be open daily from
10:00 until 17:00

www.sasa-artists.co.za



Orange Art Project Fundraising Exhibition

WORKS BY JUDY CONWAY



Open to Public : First Thursday April 2nd - 5PM

Official Opening : April 4th - 11AM

SPIN STREET GALLERY

6 Spin Street, Cape Town

Exhibition runs from April 7th to April 29th 2026



orangeartproject.co.za

- IN MEMORIAM -

We note with sadness the passing of **Barbara Smithie** on Sunday, 29 March. Although no longer a member, Barbara gave many years of dedicated service to the Society, running the catering portfolio whilst on council. Barbara was 92 and had stepped back from active involvement after Covid, but her contribution

and warm presence will be remembered by many.

Our thoughts are with her family and friends at this time.



WHAT'S ON



Exhibit B

Peter Clarke Art Centre, Vredenhof, Keurboom Road, Newlands.

Online submissions deadline: 10 April

Opening of Exhibition: 8 May, 18:00

Silent Auction: 8 May, 18:30 to 19:30



A Little Life

Eleven artists offer diverse contemporary perspectives on the traditional Still Life.

Exhibition closes on Sunday 12 April 2026.

For more information at fynarts@hermanus.co.za or [084 600 7058](tel:0846007058).

The Norval Foundation

IRMA STERN: A LIFE OF DISPLACEMENT

Exhibition Dates: 12 February – 17 August 2026

A landmark series of exhibitions tracing the extraordinary life, journeys, and artistic legacy of one of South Africa's most celebrated modernists, Irma Stern.



Art and Artists of South Africa

South Africa's premier online directory of visual artists

Art and Artists of South Africa is a dedicated platform connecting South African visual artists with collectors, galleries, and art lovers. Their mission is to showcase the incredible depth and diversity of South African art.

Visit www.artandartists.co.za to create your artist's profile

THE DECKLE EDGE



Art Society Members Save 10% on Art Supplies

Over 20 000 Fine Art Materials To Choose From

www.deckledge.co.za



Email: hello@deckledge.co.za

Call: 021 201 4100



*Brushy
and Canvas*
is now

art
savings
club.co.za

Now you can shop your favourite fine art and fine writing supplies from the world's leading brands, right on your doorstep!

Exciting **NEW RANGES** to South Africa arriving **SOON!**

CAPE TOWN BRANCH
☎ 021 674 3022
cpt@artsavingsclub.co.za
Belvedere Square
Cnr Belvedere & Keurboom Rd, Claremont.

10% DISCOUNT
TO ART SOCIETY MEMBERS IN-STORE

We are adding products to the Cape Town offering daily and working hard to get all your favourites to you soon! **Visit us and let us know what you would like to see!** Janet and the team are looking forward to welcome you!

HELLO CAPE TOWN!

"In the early twenty-first century, polyester (PET form) exhibits the best combination of properties and provides the most promising starting point to improve the performance of artists' canvas even though it has yet to match linen or cotton kinaesthetically or aesthetically."

"Conservation of Easel Paintings"
By Joyce Hill Stoner & Rebecca Rushfield



**And now it is here...
Introducing ACF Canvas!
Developed, designed and
manufactured in South Africa!**



YOUTUBE VIEWS: I Juried a Painting Competition. THIS Gets You Rejected



Chelsea Lang, a professional oil painter, shares her love and knowledge of painting alla prima with her 159K Youtube followers with weekly painting tutorials, time lapse videos, and talks about the habits and mindset of successful painters.

Here she shares her perspective and experiences around art competitions.

<https://www.youtube.com/watch?v=OJKMmJasqHA>

loot.co.za

Loot.co.za invites you to shop our wide range of Arts and Crafts supplies at great prices

GET 5% OFF ARTS AND CRAFTS PRODUCTS WHEN YOU USE THE COUPON CODE:

SASAAPRILART26

Minimum spend R250
Expires 1 May 2026
One voucher per customer and order

www.facebook.com/Lootcoza
www.x.com/lootcoza
www.instagram.com/lootcoza
www.tiktok.com/@lootcoza

CLICK www.loot.co.za DIAL 087 820 LOOT (5668) EMAIL info@loot.co.za

FIND EVERYTHING YOU NEED ONLINE AT www.loot.co.za FREE COURIER OR CLICK & COLLECT DELIVERY ON ALL ORDERS OVER R450 ANYWHERE IN SOUTH AFRICA*

PAINTING GROUPS WITH SPACE TO PAINT

THURSDAY: 10am to 1pm in Claremont (JP Duminy Hall). Easels, tables, and chairs are available. Bring own painting supplies and refreshments. For more information on the above, please contact Audrey: Cell: 076 5713 976 or email: audsinnes@hotmail.com

FRIDAY MORNING: Non-tutored Art Group at Peter Clarke Art Centre in Claremont. Enjoy a relaxed morning of painting or drawing with a friendly bunch of artists. For further details contact Dianne: Cell: 082 8955 122

MEMBERS' DISCOUNTS

Your 2025 membership card will allow you to claim a **10% discount** from:

- **ACF Bespoke Canvases**
- **Deckle Edge**, Salt River
- **ETH Canvas**, Woodstock
- **Artsavingsclub**, Claremont
- **Artland**, Diep River
- **The W'rite Shoppe**, Longbeach and Sun Valley Malls and Steenberg Village
- **Oxford Framing & Art Supplies**, Garden Centre and West Coast Mall.

Also a **5% discount** from:

- **Art Sauce**, Cape Town.
- **Loot.co.za**, on all sales of R250 or more. (use the coupon code)

Winsen's Canvases offer free delivery of their canvases from their factory in Johannesburg.

Please present your membership card, either digital or printed, to claim your discount.

Present your SASA Membership Card and receive a 10% discount on all art supplies purchased at The Write Shoppe.

THE W'RITE SHOPPE

Your art supply store at
LONGBEACH MALL
SUN VALLEY MALL
REDDAM AVE
All branches: **021-7857614**

ART CLASSES

LAURA WENMAN MFSASA teaches drawing and oil painting technique classes for beginners to advanced students from her studio in Parklands on Tuesday mornings and Friday afternoons. Contact her at aurawenman@gmail.com

SONJA FRENZ FSASA runs workshops from her studio in Durbanville. Contact her at sonjafrenz@gmail.com for more information

ANSCHEN FRIEDRICH FSASA holds her PanPastal introductory Workshop in Platteklouf. Contact her at info@artbyanschen.com

LYN NORTHAM FSASA holds her 'beginner and/or get back to it' oil classes at the Newlands Scout Hall on Thursday mornings. Contact her at northamlyn@gmail.com

WYN ROSSOUW FSASA offers morning classes in the Bergvliet area, specialising in drawing and oil painting. Beginner's welcome! Contact her at wynrossouw@gmail.com

PENNY STEYNOR SFSASA holds watercolour classes during the week from a studio in Pinelands. Contact her at steynor@mweb.co.za

HELEN VAN STOLK FSASA offers workshops (online and live-experiential) for artists exploring intuitive expressive

creativity. For more information, please email helenvstolk@gmail.com or visit <https://www.helenvstolk.com>

ELIZE BEZUIDENHOUT holds regular portrait workshops in her studio in Durbanville. For more information and to find out times, contact Elize at elize.artist@gmail.com

GLENDAM CHAMBERS offers both morning and evening classes and regular workshops in watercolour and oil in the Blaauwberg area. You can contact her at gchambers@mweb.co.za

LESLEY CHARNOCK teaches oil painting workshops: portraits, still life, colour mixing and en plein air workshops in the winter months only (May to November). Contact her at lesleycharnock@gmail.com or on 082 424 1033

SALOMÉ KRUGER offers drawing classes in Somerset West at the Helderberg Fine Art studios, Wednesday mornings from 09:00 to 12:00. For more information contact her on 072 591 2667 or at smkruger@mweb.co.za



MARCELLE LYONS holds oil and watercolour classes, workshops and courses in the Girl Guide Hall, Alma Road, Rosebank on Monday mornings. Contact her at marcelle.lyons@gmail.com

JOANNE MCGILVRAY holds sculpture classes in Kalk Bay for any hand built ceramic pieces, including sculptures, functional art and decorative clay work. 6-week modules, maximum 4 students per class. Contact her on 082 443 3116 or at joanne.mcgilvray@gmail.com

LYNNE MENGE holds regular workshops and classes in acrylic in her studio in the Milnerton area. Contact her at lynne@adrenalyn.co.za

VICKI NORCLIFFE gives portrait classes working with any medium on Monday mornings and workshops throughout the year, always painting from a model from her studio. Contact +27761988678 or vickinorcliffart@gmail.com

LIZ PEARSON offers basic oil painting classes every Monday and Tuesday morning in the Kenilworth area. Please contact her at lizp@iafrica.com

INGE SEMPLE from January 2025 runs beginner and intermediate drawing, watercolour and oil classes at Peter Clarke Art Centre and workshops in other venues in Cape Town for Cornerstone Art Atelier. Inge can be contacted via www.ingesemple.com or 072 597 5375.

IZAK VOLLGRAAFF offers Tuesday evening art classes in the City Bowl and Saturday morning classes in Edgemead. Contact Izak at izakart@gmail.com or on 082 468 4794

KIM WATERMEYER (In The Zone) – Light and airy studio in Plumstead. For fun, relaxed acrylic painting & mixed media lessons for beginners and intermediates. She also offers a wide variety of creative workshops throughout the year. 079343 5953 / www.kimwatermeyer.co.za/blog



FRAMERS



We have included a list of our members who offer framing services. If you would like your name added to this list, please email: secretary@sasa-artists.co.za

Artland Framing - Unit D8, Prime Park, Mocke Road, Diep River 7800 South Africa www.artland.co.za +27 83 265 7737 - From Concept to Conclusion. Wide range of framing options with personal service and professional workmanship.

Coralie Bradburn, Blaauwberg - Custom mountboard cutting. She has a computerised mount cutter, so all work is accurate and precise. Individual boards or bulk cuts, regular, v-groove, circular, oval and many more options. White and off-white boards always available: other colours can be ordered on request. 082 925 2416.

Mountain View Framing & Design - Shop 13, Platteklouf Shopping Centre. Bespoke framing of all artworks. Contact Pamela on 021 558 4863 or at mvframing@outlook.com Website: mountainviewframing-design.com

Village Framers - 58 Belvedere Road, Claremont. 021 683 8996 or 084 585 4535; info@villageframers.co.za, www.villageframers.co.za

Winsen's Canvases -Specialises in manufacturing custom-made artists' canvases and custom, hand-gilded frames, with the capability of re-stretching original artworks, including the stretching of canvas prints. Unit 3, Block C, Gallagher Corner, 23 Richard's Drive, Midrand. Free courier delivery nationwide. 011 315 0565; www.winsens.co.za

ADVERTISING RATES

All money earned from advertising goes towards the SASA Outreach Programme.

To advertise in the newsletter or send out an email to the SASA database, the rates for *Art-related* events are:

Newsletter: Full page **R260** Half page **R160** Quarter page **R95**

Email rates: Business or non-members advertising service or goods for profit **R250**.
Members advertising service or goods for profit **R200**.
This also includes a post on the SASA Facebook page.

Bookings Contact: secretary@sasa-artists.co.za

Please Like, Follow and Share the SASA Social Media Posts and Pages. Thank you.



<https://www.facebook.com/SASArtists>



<https://www.instagram.com/sasa.artists>

We are an affiliate member of the
South African National Association for the Visual Arts
(SANAVA)



President: Liz Pearson president@sasa-artists.co.za

Secretary: Louise van Wyk 071 496 1029 secretary@sasa-artists.co.za

Treasurer: Mike Forrester 021 761 6357 treasurer@sasa-artists.co.za

WEBSITE: <http://www.sasa-artists.co.za>

POSTAL: PO Box 2574, Clareinch, 7740